

Blood Circulation

Dr. Yoga Sundram

Heart Valves

Between atria and ventricles (Atrio-ventricular valves)

Left – Bicuspid (Mitral)

Right – Tricuspid

Between Ventricles and artery (semi-lunar valves)

Right – Pulmonary valve

Left – Aortic valve

Flow of blood

Blood Returning to Heart

Left Atrium – Pulmonary vein bringing blood from pulmonary circulation (oxygenated blood)

Right Atrium – Venae cavae bringing blood from systemic circulation (de-oxygenated blood)

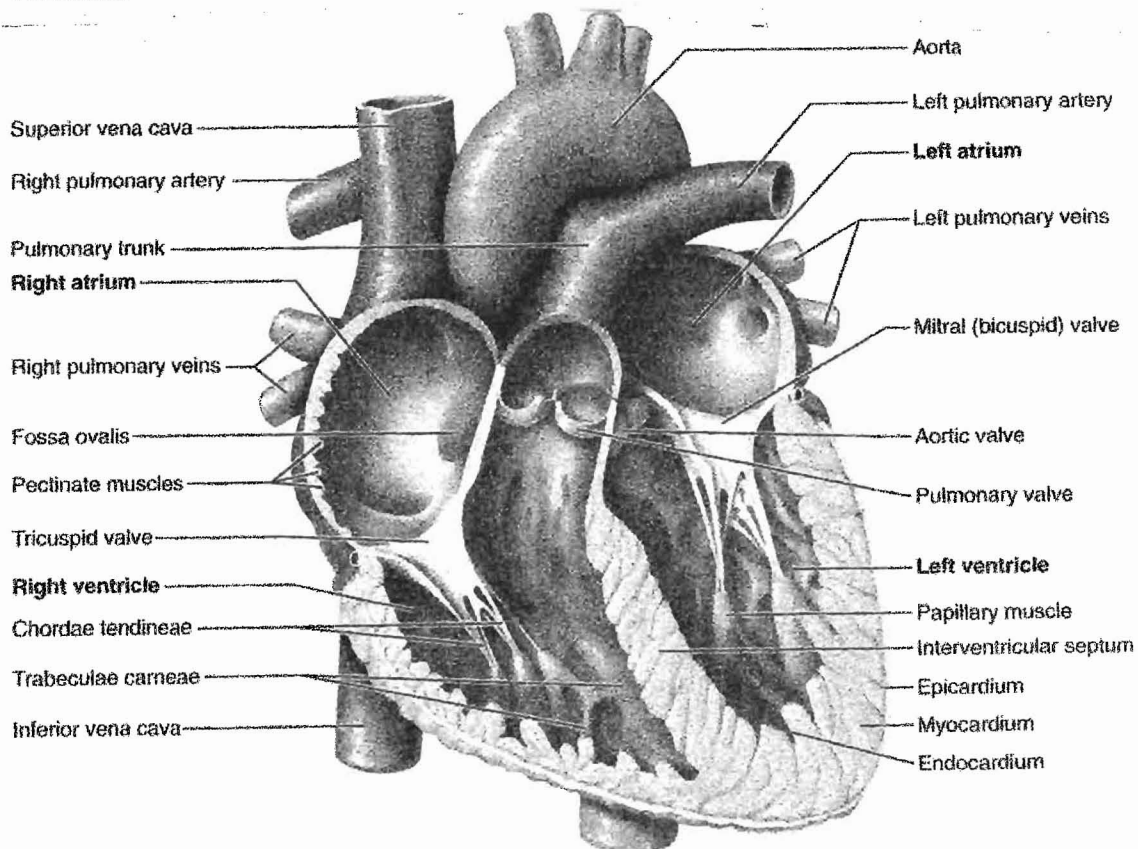
Blood Leaving Heart

Left Ventricle – Aortic arch taking blood to systemic circulation (oxygenated blood)

Right Ventricle – Pulmonary artery taking blood to pulmonary circulation (de-oxygenated blood)

Complete Circuit

Left ventricle – aortic valve – aortic arch – arteries – systemic capillaries – veins – venae cavae – **right atrium** – tricuspid valve – **right ventricle** – pulmonary valve – pulmonary artery – pulmonary capillaries – pulmonary vein – **left atrium** – bicuspid valve – **left ventricle**



Front (Anterior) view

